

Daily report

Market Summary:

### Polarized market

▶ In the first trading session of the week, the VN-Index recorded a 22-point increase, nearing its previous peak before geopolitical tensions impacted the index. However, the upward momentum lacked uniformity and was mainly concentrated in the VinGroup's stocks. The market was clearly polarized, with the trio of VIC-VHM-VRE reaching their upper limit, while most other sectors were in the red. The oil and gas sector continued to correct sharply, with many stocks recording significant declines. In addition, a few individual stocks also saw good price increases, such as STB, NVL, and MWG. Market liquidity narrowed before the long holiday, with the total trading value across all three exchanges only around 20 trillion VND.

▶ At the close of trading, the VN-Index increased by 22.55 points (+1.22%), closing at 1,875.84 points; The HNX-Index fell 2.51 points (-1%), reaching 249.44 points. Total trading volume across all three exchanges was approximately 20.6 trillion VND, corresponding to over 725 million shares traded. Foreign investors continued their strong net selling with a value of 533 billion VND, with FPT (-286 billion VND) and VHM (-166 billion VND) being the stocks experiencing the most significant net selling. Conversely, VRE and NVL were the stocks with the most net buying.

▶ VIC (+6.32%), VHM (+6.94%), and STB (+4.93%) were the three stocks contributing most to the index's rise. Conversely, GAS (-6.13%), BSR (-6.40%), and VCB (-1.32%) were the three stocks that dragged down the market's points the most.

▶ Real estate and retail were the two sectors that contributed most significantly to the market's gains in today's trading session. Notable examples include VIC and MWG.

▶ **Technical perspective:** The VN-Index recovered, regaining some of the previous session's losses, despite remaining low liquidity. Notably, the current upward momentum is mainly driven by Vingroup's blue-chip stocks, meaning the index's performance doesn't fully reflect the overall market strength. Selling pressure remains in the oil and gas sector, while most other sectors are only fluctuating slightly or trading sideways. In the short term, the index is expected to continue its upward trend towards the historical peak of 1,920-1,950 points before facing correction pressure. The nearest support level is at the psychological mark of 1,800 points, while a stronger support zone is identified around 1,680 points.

In the base-case scenario: The ceasefire agreement has improved investor sentiment, but the two sides have yet to reach a complete agreement to end the war. During this volatile period, the VN-Index continues to head towards its previous peak of 1,950 points.

In a worst-case scenario: Prolonged disruptions in the Strait of Hormuz could further tighten global oil supply, keeping oil prices high for an extended period. This scenario increases the risk of stagflation (high inflation coupled with low economic growth). Historically, such environments are often unfavorable for the stock market and could lead to a deeper correction in the VN-Index. If the market continues to decisively lose the 1,580 support level, accompanied by weak recovery sessions, the downtrend could be further strengthened.

**Strategy:** Investors should limit chasing rallies and selectively choose stocks showing improvement in business operations. At the current stage, capital flows tend to favor sectors linked to domestic momentum such as public investment, banking, and construction materials. For the real estate sector, after a period of deep discounts, signs of capital inflow have appeared in recent sessions. Meanwhile, the securities sector continues to be supported by the market upgrade story, thereby maintaining a certain attractiveness to investors.



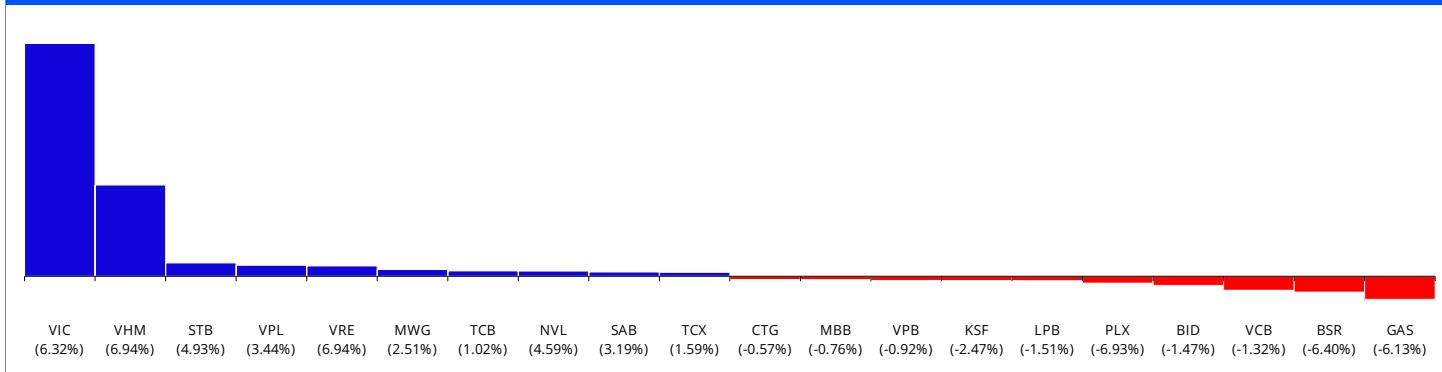
| Index       | Price | %1D  | %1M  | %1Yr. | PER  | PBR | Mkt Cap   |
|-------------|-------|------|------|-------|------|-----|-----------|
| VN-Index    | 1,876 | 1.2  | 12.1 | 52.9  | 17.2 | 2.2 | 8,712,889 |
| VN30 Index  | 2,041 | 1.5  | 12.1 | 55.6  | 15.5 | 2.3 | 6,242,988 |
| VN Midcap   | 2,182 | -1.1 | -0.4 | 24.5  | 15.6 | 1.5 | 1,411,578 |
| VN Smallcap | 1,402 | -0.5 | -1.2 | 5.0   | 13.4 | 0.9 | 302,487   |
| HNX Index   | 249   | -1.0 | -1.2 | 18.0  | 13.7 | 1.5 | 400,939   |
| UpCom       | 128   | 0.1  | 2.7  | 38.4  | 12.1 | 1.6 | 651,714   |

| Sector                | %1D  | %1M   | %YTD  | %1 Yr. | PER  | PBR | Mkt Cap   |
|-----------------------|------|-------|-------|--------|------|-----|-----------|
| Retail                | 2.0  | 2.8   | -1.7  | 1.4    | 20.1 | 3.8 | 170,311   |
| Insurance             | -0.7 | -14.0 | 18.4  | 47.8   | 15.6 | 1.9 | 65,814    |
| Real Estate           | 5.6  | 53.3  | 19.6  | 257.1  | 35.7 | 3.8 | 2,780,043 |
| Technology            | 1.1  | 0.2   | -20.9 | -20.1  | 13.6 | 2.9 | 141,022   |
| Oil & Gas             | -5.9 | -12.1 | 2.6   | 24.2   | 23.9 | 2.4 | 63,903    |
| Financial Services    | -0.8 | 3.3   | 2.3   | 39.4   | 14.1 | 1.5 | 250,220   |
| Utilities             | -3.9 | -6.5  | -2.3  | 21.2   | 13.2 | 1.9 | 316,648   |
| Travel & Leisure      | -1.0 | 9.4   | -7.4  | 47.1   | 17.9 | 5.0 | 183,345   |
| Indus. Goods&Services | -1.7 | -3.2  | 2.9   | 22.8   | 13.3 | 1.6 | 173,409   |
| Per.& Household Goods | -2.8 | -3.8  | 0.3   | 29.0   | 10.9 | 1.6 | 58,079    |
| Chemicals             | -1.3 | -3.2  | 16.4  | 24.9   | 16.4 | 1.8 | 223,011   |
| Banks                 | -0.6 | 4.0   | 1.9   | 27.9   | 9.5  | 1.6 | 2,656,739 |
| Car & Parts           | -0.3 | -2.8  | -1.4  | 15.6   | 3.6  | 0.9 | 15,713    |
| Basic Resources       | -0.4 | 3.0   | 5.4   | 30.4   | 15.1 | 1.4 | 258,775   |
| Food & Beverage       | 0.1  | 2.1   | -0.5  | 16.0   | 16.2 | 2.5 | 451,924   |
| Media                 | 0.1  | -1.4  | -11.1 | -4.9   | 22.4 | 0.9 | 2,388     |
| Cons. & Materials     | -1.4 | -0.2  | -0.6  | 23.3   | 11.5 | 1.3 | 143,750   |
| Health Care           | 0.1  | -6.4  | -4.3  | 6.2    | 18.3 | 2.0 | 38,610    |

| Term         | Price  | %1D  | %1W  | %1M   | %3M   | %YTD  | %1Yr. |
|--------------|--------|------|------|-------|-------|-------|-------|
| Dollar index | 99     | 0.2  | 0.3  | -1.5  | 2.3   | 0.3   | -0.4  |
| USD/JPY      | 160    | 0.1  | 0.2  | 0.0   | 4.1   | 1.9   | 12.4  |
| USD/CNY      | 7      | 0.1  | 0.1  | -1.1  | -1.6  | -2.2  | -6.2  |
| KRW/USD      | 1,474  | 0.0  | -0.4 | -3.0  | 2.6   | 2.4   | 2.6   |
| EUR/USD      | 1      | 0.2  | 0.4  | -2.0  | 2.2   | 0.4   | -2.4  |
| USD/VND      | 26,346 | 0.0  | 0.1  | 0.0   | 1.0   | 0.2   | 1.3   |
| WTI          | 99     | 2.6  | 7.3  | -0.8  | 56.4  | 72.2  | 59.4  |
| Gasoline     | 352    | 0.9  | 9.7  | 8.4   | 86.2  | 106.6 | 67.3  |
| Natural gas  | 3      | -1.0 | -6.4 | -18.4 | -66.2 | -31.5 | -20.4 |
| Coal         | 132    | 1.6  | -0.3 | -2.5  | 21.6  | 23.0  | 41.1  |
| Gold         | 4,620  | -1.3 | -2.1 | 2.4   | -14.7 | 7.0   | 38.2  |
| China HRC    | 3,376  | -0.3 | 0.7  | 2.4   | 3.1   | 3.2   | 1.4   |

Sources: Bloomberg

### Contributors to VN Index



[Analyst]

Nhi Nguyen

(84-28) 6299 - 8000

nhi.ntt@shinhan.com

Following SSV's Zalo, Catching the latest report



Please click or scan

# Stock Feeds

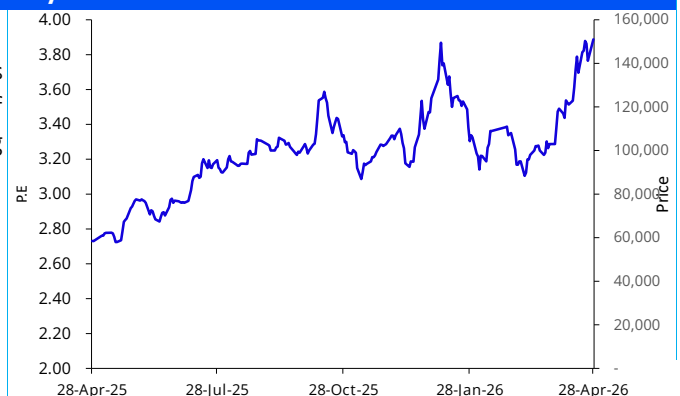
## Highlight News

- MWG – Retail:** In Q1/2026, Mobile World Group recorded net revenue of VND 46,462 billion, after-tax profit of VND 2,757 billion, and profit from financial activities of nearly VND 436 billion, mainly due to interest on deposits, loans, and bond investments.
- DCM – Chemicals:** In Q1, the sharp increase in fertilizer prices created a clear divergence in business results: urea groups such as Ca Mau Fertilizer and Phu My Fertilizer recorded strong profit growth, while phosphate and DAP fertilizer businesses faced cost pressure and saw reduced profits.
- TPB – Banking:** At its 2026 Annual General Meeting, TPBank aims for approximately 15% credit growth and consolidated pre-tax profit of VND 10,300 billion, a 12% increase compared to 2025, emphasizing the role of governance and its team of over 8,000 employees.
- DPM – Chemicals:** In Q1 2026, Phu My Fertilizer recorded revenue of VND 5,706 billion, achieving 150% of the quarterly plan and 32% of the annual plan, with pre-tax profit of VND 515 billion, reaching 61% of the 2026 annual plan.
- VIC – Real Estate:** Vingroup announced consolidated net revenue for Q1 2026 reaching VND 104,352 billion, a 24% increase compared to the same period in 2025, and after-tax profit of VND 5,611 billion, a 150% increase. Total assets as of March 31, 2026 reached VND 1,179 trillion.
- TCB – Banking:** At the end of Q1 2026, Techcombank achieved service income of VND 3,600 billion, a 47% increase compared to the same period and accounting for 16% of the total fee market share in the industry in 2025. Pre-tax profit in Q1 2026 was nearly VND 8,900 billion, an increase of nearly 23%.
- LPB – Banking:** LPBank presented a plan to pay cash dividends of approximately VND 9,000 billion at a rate of 30% and sought shareholder approval for the establishment of a wholly-owned subsidiary bank in VIFC to develop international financial services.
- FPT – Technology:** FPT has a strategic partnership with Intel to deploy an AI-powered self-operating factory model, combining Intel's high-speed simulation and digital mirroring technology with FPT's data platforms and digital manufacturing solutions.
- EIB – Banking:** Eximbank aims for a pre-tax profit of VND 1,515 billion in 2026, will not pay dividends, and will elect replacements for several members of the Board of Directors and Supervisory Board for the 2025-2030 term at its annual general meeting.

## Stock of the day

### Vinhomes Joint Stock Company - VHM

**VHM – Real Estate:** Vinhomes approved a cash dividend of 60% of its charter capital, equivalent to VND 24,600 billion, and a stock dividend of 100%, expected to be implemented in 2026. It is also currently developing several large projects such as Olympic, Green Paradise, and Ha Long Green



# Cashflow Trend

| Cash flow between industry groups (VND bn) |                             |                           |           |           |        |               |  |  |  |
|--|-----------------------------|---------------------------|-----------|-----------|--------|---------------|--|--|--|
| No   | Sectors                     | % Liquidity Change AVG 1W | 4/27/2026 | 4/28/2026 | 1W AVG | 10 days Trend |  |  |  |
| 1  | Oil & Gas                   | 48.3                      | 671       | 1,090     | 735    |               |  |  |  |
| 2  | Real Estate                 | 14.4                      | 3,942     | 5,144     | 4,494  |               |  |  |  |
| 3  | Technology                  | 8.3                       | 784       | 711       | 657    |               |  |  |  |
| 4  | Utilities                   | 5.2                       | 211       | 325       | 309    |               |  |  |  |
| 5  | Travel & Leisure            | 0.0                       | 295       | 258       | 258    |               |  |  |  |
| 6  | Insurance                   | -5.7                      | 51        | 50        | 53     |               |  |  |  |
| 7  | Retail                      | -7.7                      | 507       | 636       | 689    |               |  |  |  |
| 8  | Chemicals                   | -8.6                      | 691       | 569       | 622    |               |  |  |  |
| 9  | Industrial Goods & Services | -9.8                      | 903       | 1,105     | 1,225  |               |  |  |  |
| 10   | Automobiles & Parts         | -13.1                     | 66        | 52        | 60     |               |  |  |  |
| 11   | Health Care                 | -15.8                     | 40        | 32        | 39     |               |  |  |  |
| 12   | Banks                       | -19.2                     | 4,541     | 4,315     | 5,341  |               |  |  |  |
| 13   | Personal & Household Goods  | -21.8                     | 130       | 146       | 187    |               |  |  |  |
| 14   | Construction & Materials    | -22.5                     | 1,097     | 885       | 1,142  |               |  |  |  |
| 15   | Food & Beverage             | -25.5                     | 1,354     | 895       | 1,202  |               |  |  |  |
| 16   | Media                       | -27.2                     | 6         | 7         | 10     |               |  |  |  |
| 17   | Financial Services          | -34.5                     | 998       | 1,096     | 1,673  |               |  |  |  |

| Top 5 tickers in trading value 1 week |                    |                    |             |      |      |       |                  |                   |       |
|---------------------------------------|--------------------|--------------------|-------------|------|------|-------|------------------|-------------------|-------|
| Ticker                                | Company name       | Sectors            | Performance |      |      |       | Trading Stats    |                   |       |
|                                       |                    |                    | Close price | %1D  | % 1W | %YTD  | %Turnover Change | Turnover (VND bn) | Trend |
| NVL                                   | Novaland           | Real Estate        | 20,500      | 5.4  | 19.5 | 53.6  | 206.4            | 844.4             |       |
| TCB                                   | Techcombank        | Banks              | 34,600      | 1.0  | 6.1  | -0.9  | 132.4            | 582.0             |       |
| HDG                                   | HA DO Construction | Real Estate        | 25,550      | -3.9 | -9.7 | -4.7  | -12.2            | 64.8              |       |
| LPB                                   | LienVietPostBank   | Banks              | 45,600      | -1.5 | -0.9 | 9.1   | -32.2            | 43.4              |       |
| VIX                                   | VIX Securities     | Financial Services | 16,350      | -1.5 | -6.0 | -14.0 | -52.5            | 265.9             |       |

| Top 5 tickers in Trading volume 1 week |                       |                          |             |      |      |       |                |                |       |
|--|-----------------------|--------------------------|-------------|------|------|-------|----------------|----------------|-------|
| Ticker                                 | Company name          | Sectors                  | Performance |      |      |       | Trading Stats  |                |       |
|  |                       |                          | Close price | %1D  | % 1W | %YTD  | %Volume Change | Volume (x1000) | Trend |
| LGL                                    | Long Giang Investment | Real Estate              | 6,320       | 4.3  | 10.9 | 3.4   | 907.0          | 651.40         |       |
| CTI                                    | CuongThuan IDICO      | Construction & Materials | 21,450      | -2.5 | -3.4 | -3.6  | 81.5           | 882.80         |       |
| TCI                                    | Thanh Cong Securities | Financial Services       | 10,450      | -1.9 | 1.0  | 6.7   | 60.4           | 385.90         |       |
| BMI                                    | Bao Minh Insurance    | Insurance                | 15,100      | 0.3  | -2.9 | -12.7 | 20.2           | 706.60         |       |
| LPB                                    | LienVietPostBank      | Banks                    | 45,600      | -1.5 | -0.9 | 9.1   | -20.6          | 1739.20        |       |

| Top net buy and sell of foreign investors during the day (VND bn) |     |                 |        | Foreign Investor Trading Activities (VND bn) |            |             |           |
|---|-----|-----------------|--------|--|------------|-------------|-----------|
| Top Sell Tickers  |     | Top Buy Tickers |        | Date   | Buy        | Sell        | Net value |
| (285.78)  | FPT | NVL             | 119.05 | 4/28/2026                                    | 2795.19675 | 3328.3552   | -533.2    |
| (169.08)  | VHM | VIC             | 87.74  | 4/24/2026                                    | 1587.37113 | 3522.519614 | -1,935.1  |
| (81.05)   | SHB | STB             | 65.82  | 4/23/2026                                    | 2438.4265  | 4097.823116 | -1,659.4  |
| (64.86)   | VPB | SSI             | 63.20  | 4/22/2026                                    | 2189.80067 | 2286.322658 | -96.5     |
| (57.86)   | ACB | MSN             | 55.80  | 4/21/2026                                    | 3022.87576 | 3407.225892 | -384.4    |
| (55.96)   | BSR | MWG             | 41.07  | 4/20/2026                                    | 2575.10187 | 3189.927148 | -614.8    |
| (53.17)   | DGC | TCH             | 39.16  | 4/17/2026                                    | 3145.74154 | 3039.285087 | 106.5     |
| (8.08)  | PVD | VPL             | 24.30  | 4/16/2026                                    | 2953.43404 | 4107.293711 | -1,153.9  |
| (7.64)  | GAS | BVH             | 15.76  | 4/15/2026                                    | 2322.82233 | 5827.889649 | -3,505.1  |
| (6.59)  | MBB | VCK             | 14.22  | 4/14/2026                                    | 2309.33234 | 2156.303036 | 153.0     |
|   |     |                 |        | 4/13/2026                                    | 1389.58346 | 1487.549542 | -98.0     |
|   |     |                 |        | 4/10/2026                                    | 2338.83    | 1499.173101 | 839.7     |
|   |     |                 |        | 4/9/2026                                     | 2700.9691  | 5195.22655  | -2,494.3  |
|   |     |                 |        | 4/8/2026                                     | 3609.39972 | 4194.742    | -585.3    |
|   |     |                 |        | 4/7/2026                                     | 1386.15783 | 2210.459972 | -824.3    |
|   |     |                 |        | 4/6/2026                                     | 1645.52252 | 1761.629351 | -116.1    |

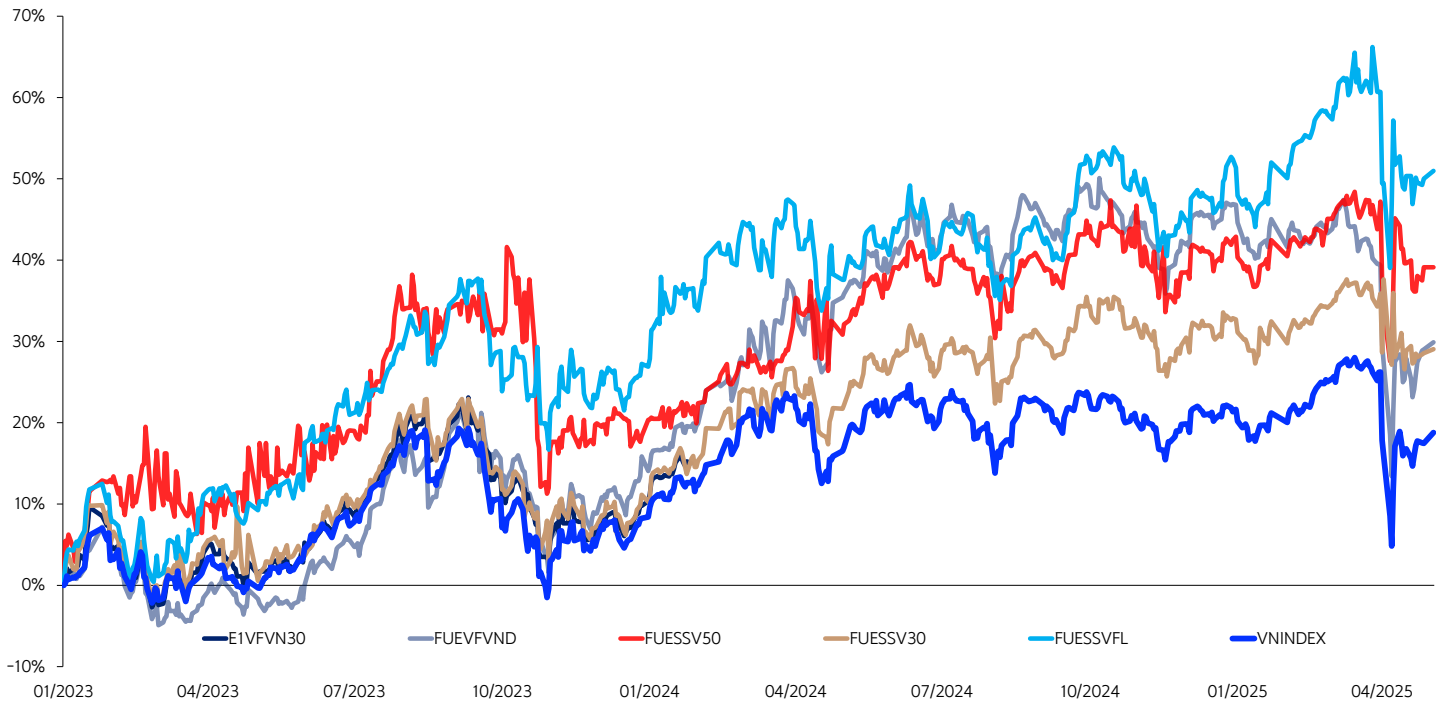
Source: Fiiopro

# ETF

## Trading statistics of domestic ETFs

| No | Name                       | Ticker   | Price (VND) | %1D   | %1M   | YTD   | Trading volume | Trading value (VND bn) | 10-sessions liquidity |
|----|----------------------------|----------|-------------|-------|-------|-------|----------------|------------------------|-----------------------|
| 1  | DCVFMVN30 ETF Fund         | E1VFN30  | 35,800      | 0.1%  | 10.8% | -0.8% | 401,400        | 14.4                   |                       |
| 2  | SSIAM VNX50 ETF            | FUESSV50 | 29,950      | -0.2% | 5.1%  | 5.4%  | 2,500          | 0.1                    |                       |
| 3  | SSIAM VNFIN LEAD ETF       | FUESSVFL | 29,750      | 0.3%  | 3.7%  | -2.0% | 9,600          | 0.3                    |                       |
| 4  | DCVFMVN Diamond ETF        | FUEVFVND | 36,900      | -0.8% | 0.1%  | -3.7% | 117,400        | 4.3                    |                       |
| 5  | VinaCapital VN100 ETF      | FUEVN100 | 26,290      | 0.3%  | 6.6%  | 3.0%  | 31,200         | 0.8                    |                       |
| 6  | SSIAM VN30 ETF             | FUESSV30 | 25,250      | 1.0%  | 8.8%  | -0.9% | 15,700         | 0.4                    |                       |
| 7  | MAFM VN30 ETF              | FUEMAV30 | 24,680      | 0.6%  | 10.8% | -0.5% | 8,400          | 0.2                    |                       |
| 8  | IPAAM VN100 ETF            | FUEIP100 | 12,800      | 0.0%  | 8.5%  | 2.8%  | 0              | n.a                    |                       |
| 9  | KIM Growth VN30 ETF        | FUEKIV30 | 13,790      | 1.4%  | 11.8% | 0.1%  | 1,100          | 0.0                    |                       |
| 10 | DCVFMVN Mid Cap ETF        | FUEDCMID | 14,120      | -2.5% | -5.9% | -4.7% | 29,400         | 0.4                    |                       |
| 11 | KIM Growth VNFINSELECT ETF | FUEKIVFS | 17,430      | 0.0%  | 6.0%  | -0.8% | 0              | n.a                    |                       |
| 12 | MAFM VNDIAMOND ETF         | FUEMAVND | 15,450      | 0.1%  | -0.5% | -5.3% | 1,000          | 0.0                    |                       |
| 13 | FPT CAPITAL VNX50 ETF      | FUEFCV50 | 14,890      | 0.0%  | 2.3%  | 3.4%  | 0              | n.a                    |                       |
| 14 | KIM GROWTH VN DIAMOND ETF  | FUEKIVND | 13,690      | n.a   | n.a   | -4.8% | 0              | n.a                    |                       |
| 15 | Bao Viet Fund VN Diamond   | FUEBFVND | n.a         | n.a   | n.a   | 0.0%  | 0              | n.a                    |                       |
| 16 | An Binh Fund VN Diamond    | FUEABVND | 11,200      | n.a   | n.a   | 3.6%  | 0              | n.a                    |                       |

## Performance of ETFs vs VNINDEX



## Statistics of domestic ETFs

| No | Name                    | Management company | Inception date | Tracking Index | AUM (USD mn) | Fund flow 1M (USD mn) | Fund flow 3M (USD mn) | Annualized Return (%) | Std. 1Y (%) | Beta | Dividend yield (%) | PB (x) | PE (x) | Weight of top 10 holdings (%) |
|----|-------------------------|--------------------|----------------|----------------|--------------|-----------------------|-----------------------|-----------------------|-------------|------|--------------------|--------|--------|-------------------------------|
| 1  | DCVFMVN30 ETF Fund      | DCVFM              | 8/14/2014      | VN30TR         | 2            | (58,201)              | 57,397                | 56.7                  | 21.0        | 0.9  | 1.77               | 2.0    | 12.4   | 46.0                          |
| 2  | SSIAM VNX50 ETF         | SSIAM              | 12/15/2014     | VNX50IX        | 154,786      | -                     | -                     | 54.4                  | 24.7        | 0.8  | 1.64               | 1.8    | 13.7   | 52.3                          |
| 3  | SSIAM VNFIN LEAD ETF    | SSIAM              | 2/24/2020      | VNFL           | 555,871      | -                     | 26,737                | 37.5                  | 26.6        | 1.0  | 1.85               | 1.4    | 8.8    | 85.8                          |
| 4  | DCVFMVN Diamond ETF     | DCVFM              | 5/12/2020      | VND            | 12,174,528   | (290,358)             | (899,865)             | 25.5                  | 24.1        | 0.9  | 2.06               | 1.9    | 11.2   | 85.4                          |
| 5  | VinaCapital VN100 ETF   | Vinacapital        | 6/16/2020      | VN100          | 643,907      | -                     | -                     | 53.0                  | 21.3        | 0.8  | 1.66               | 1.8    | 12.1   | 48.5                          |
| 6  | SSIAM VN30 ETF          | SSIAM              | 7/27/2020      | VN30           | 246,976      | 4,641                 | 21,188                | 56.4                  | 24.0        | 0.7  | 1.60               | 2.2    | 13.3   | 64.6                          |
| 7  | MAFM VN30 ETF           | MAFM               | 12/8/2020      | VN30           | 827,928      | (2,238)               | (60,500)              | 56.2                  | 23.5        | 1.0  | 1.70               | 2.0    | 12.2   | 65.8                          |
| 8  | IPAAM VN100 ETF         | I.P.A              | 10/12/2021     | VN100          | 64,814       | -                     | -                     | 44.5                  | 54.9        | 1.0  | 1.62               | 1.8    | 12.0   | 50.1                          |
| 9  | KIM Growth VN30 ETF     | KIM                | 1/6/2022       | VN30TR         | 2,584,554    | (2,677)               | (179)                 | 57.2                  | 25.8        | 1.0  | 1.73               | 1.8    | 11.7   | 58.9                          |
| 10 | DCVFMVN Mid Cap ETF     | DCVFM              | 9/29/2022      | VN70           | 344,200      | 5,732                 | (4,463)               | 28.4                  | 28.9        | 0.8  | 1.46               | 1.5    | 13.6   | 38.7                          |
| 11 | KIM Growth VNFINSELECT  | KIM                | 11/3/2022      | VNFS           | 279,182      | -                     | -                     | 37.2                  | 27.3        | 1.0  | 1.97               | 1.4    | 8.8    | 71.1                          |
| 12 | MAFM VNDIAMOND ETF      | MAFM               | 3/2/2023       | VND            | 299,871      | -                     | 14,170                | 25.1                  | 25.7        | 1.0  | 2.31               | 1.8    | 10.6   | 87.2                          |
| 13 | FPT CAPITAL VNX50 ETF   | FPTF               | 5/25/2023      | VNX50IX        | n.a          | -                     | -                     | 26.3                  | 39.0        | 0.6  | n.a                | n.a    | n.a    | n.a                           |
| 14 | KIM GROWTH VN DIAMON    | KIMF               | 4/24/2024      | VND            | 73,766       | n.a                   | n.a                   | 25.9                  | 27.7        | 0.9  | 1.94               | 2.0    | 12.8   | 81.7                          |
| 15 | Bao Viet Fund VN Diamon | BVF                | #N/A           | N/A            | VND          | n.a                   | n.a                   | n.a                   | 0.0         | 0.3  | n.a                | n.a    | n.a    | n.a                           |
| 16 | An Binh Fund VN Diamonc | ABF                | 8/16/2024      | VND            | n.a          | n.a                   | n.a                   | 24.4                  | 29.5        | 0.6  | n.a                | n.a    | n.a    | n.a                           |

Source: Bloomberg

## SEOUL

Shinhan Securities Co., Ltd  
Shinhan Investment Tower  
70, Youido-dong, Yongsongpo-gu,  
Seoul, Korea 150-712  
Tel : (82-2) 3772-2700, 2702  
Fax : (82-2) 6671-7573

## NEW YORK

Shinhan Investment America Inc.  
1325 Avenue of the Americas Suite 702,  
New York, NY 10019  
Tel : (1-212) 397-4000  
Fax : (1-212) 397-0032

## HONG KONG

Shinhan Investment Asia Ltd.  
Unit 7705 A, Level 77  
International Commerce Centre  
1 Austin Road West  
Kowloon, Hong Kong  
Tel : (852) 3713-5333  
Fax : (852) 3713-5300

## INDONESIA

PT Shinhan Sekuritas Indonesia  
30th Floor, IFC 2, Jl. Jend. Sudirman Kav.  
22-23, Jakarta, Indonesia  
Tel : (62-21) 5140-1133  
Fax : (62-21) 5140-1599

## SHANGHAI

Shinhan Investment Corp.  
Shanghai Representative Office  
Room 104, Huaneng Union Mansion No.958,  
Luijiazui Ring Road, PuDong, Shanghai, China  
Tel : (86-21) 6888-9135/6  
Fax : (86-21) 6888-9139

## HO CHI MINH

Shinhan Securities Vietnam Co., Ltd.  
18th Floor, The Mett Tower, 15 Tran Bach Dang Street, Thu Thiem Ward, Thu Duc  
City, Ho Chi Minh City, Vietnam  
Tel : (84-8) 6299-8000  
Fax : (84-8) 6299-4232

## HA NOI

Shinhan Securities Vietnam Co., Ltd  
Hanoi Branch  
2nd Floor, Leadvisors Building, No. 41A Ly Thai To, Ly Thai To Ward, Hoan Kiem  
District, Hanoi, Vietnam  
Tel : (84-8) 6299-8000



### Compliance Notice

- Analyst Certification: We/I hereby certify the information and material presented in this report are accurate expressions of their views, and that we/I have not received internally or externally wrongful pressure to express such views.
- All opinions and estimates regarding the company and its securities are accurate representations of the covering analyst's judgments as of this date and may differ from actual results.
- This report is intended to provide information to assist investment decisions only and should not be used or considered an offer or the solicitation of an offer to sell or to buy any securities. Stock selection and final investment decisions should be made at the client's own

### Distribution

- United States: This report is distributed in the U.S. by Shinhan Investment America, Inc., a member of FINRA/SIPC, and is only intended for major U.S. institutional investors as defined in Rule 15a-6(a)(2) under the U.S. Securities Exchange Act of 1934. All U.S. persons that receive this document by their acceptance thereof represent and warrant that they are a major U.S. institutional investor and have not received this report under any express or implied understanding that they will direct commission income to Shinhan Investment Corp. or its affiliates. Pursuant to Rule 15a-6(a)(3), any U.S. recipient of this document wishing to affect a transaction in any securities discussed herein should contact and place orders with Shinhan Investment America, Inc., which accepts responsibility for the contents of this report in the U.S. The securities described in this report may not have been registered under the U.S. Securities Act of 1933, as amended, and, in such case, may not be offered or sold in the U.S. or to U.S. person absent registration or an applicable exemption from the registration requirement.
- All Other Jurisdictions: Customers in all other countries who wish to affect a transaction in any securities referenced in this report should contact Shinhan or its affiliates only if distribution to or use by such customer of this report would not violate applicable laws and